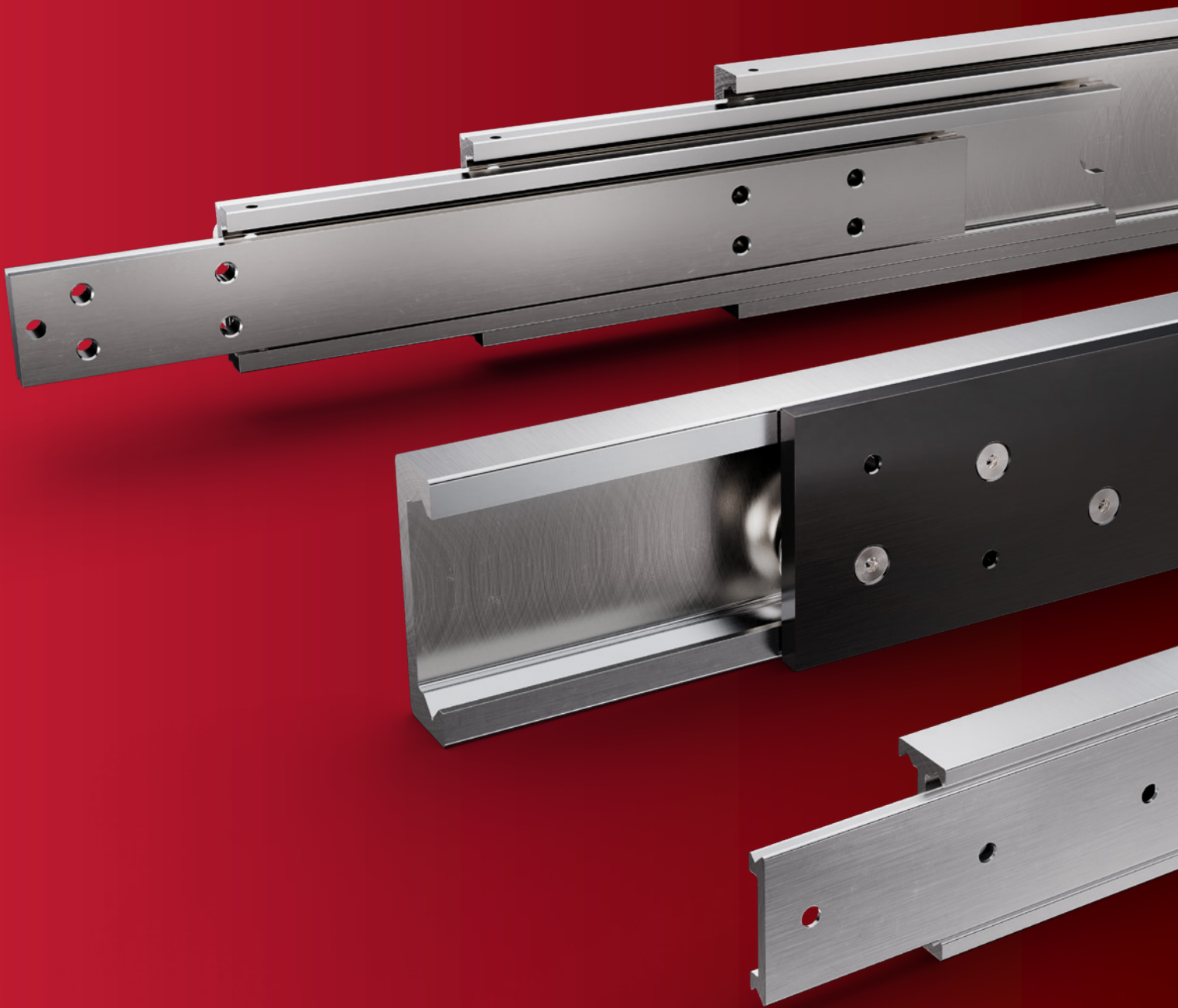


PRECISION.
CONTROL.
**ULTRA
HEAVY DUTY.**



Fulterer[®]

PRECISION. CONTROL. ULTRA HEAVY DUTY.

With ULTRA HEAVY DUTY, FULTERER introduces a new generation of heavy-duty slides – precisely engineered, versatile, and built to handle extreme loads. Whether ball-bearing, linear, or cylindrical roller slides, ULTRA HEAVY DUTY combines stability, durability, and flexibility in a modular system designed for seamless integration into a wide range of applications.

ULTRA HEAVY DUTY COMPRISES THREE PRODUCT LINES:

- FK offers a broad selection of ball-bearing slides in aluminium, steel, and stainless steel.
- FL includes precision linear slides with aluminium profiles and multiple support options.
- FZ expands the portfolio with cylindrical roller slides made of aluminium for applications that demand maximum rigidity and load-bearing capacity while maintaining low weight.

ULTRA HEAVY DUTY sets new standards for precision and heavy-duty performance.



The models shown highlight the extensive range of ULTRA HEAVY DUTY products. Each series offers multiple variants and configurations for a wide variety of applications.

ULTRA HEAVY DUTY.

FK

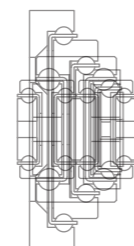
BALL BEARING SLIDES

The ULTRA HEAVY DUTY FK product line offers ball bearing slides in aluminium, carbon steel, and stainless steel. With multiple extension options – from partial and full extension to over- and over extension+ – it meets virtually every requirement.

FK combines precision, stability, and versatility, making it an ideal solution for applications across industry, vehicle construction, medical technology, and more.

THE ULTRA HEAVY DUTY FK PRODUCT LINE COVERS A RANGE FROM:

build-in widths
11 to 110 mm
0,43 to 4,33 in



slide heights
28 to 150 mm
1,10 to 5,91 in



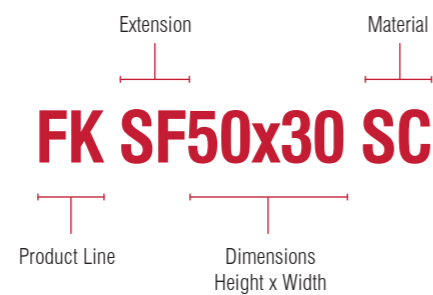
Product Group	Profile	Extension	Build-in Width	Slide Height	Load Capacity up to	Length from to
C-Beam		Regular Extension	11 to 24 mm 0,43 to 0,94 in	30 to 100 mm 1,18 to 3,94 in	1750 kg/pair 3858 lbs/pair	150 to 2000 mm 5,91 to 78,74 in
C-Beam BP		Bi-Directional Regular Extension	11 to 24 mm 0,43 to 0,94 in	30 to 100 mm 1,18 to 3,94 in	1750 kg/pair 3858 lbs/pair	150 to 2000 mm 5,91 to 78,74 in
I-Beam		Full Extension	17 to 55 mm 0,67 to 2,17 in	35 to 150 mm 1,38 to 5,91 in	2410 kg/pair 5316 lbs/pair	150 to 3000 mm 5,91 to 118,11 in
I-Beam BF		Bi-Directional Full Extension	24 to 44 mm 0,94 to 1,73 in	40 to 120 mm 1,57 to 4,72 in	1890 kg/pair 4167 lbs/pair	200 to 2600 mm 7,87 to 102,36 in
C-Beam FE		Full Extension	18 to 32 mm 0,71 to 1,26 in	45 to 100 mm 1,77 to 3,94 in	1000 kg/pair 2205 lbs/pair	150 to 2000 mm 5,91 to 78,74 in
S-Beam		Full Extension	14 to 22 mm 0,55 to 0,87 in	60 to 100 mm 2,36 to 3,94 in	435 kg/pair 959 lbs/pair	200 to 2000 mm 7,87 to 78,74 in
I-Beam FF		Full Extension	40 to 80 mm 1,57 to 3,15 in	28 to 40 mm 1,10 to 1,57 in	300 kg/pair 661 lbs/pair	200 to 1600 mm 7,87 to 62,99 in
I-Beam SX		Over Extension+	33 to 52 mm 1,30 to 2,05 in	60 to 120 mm 2,36 to 4,72 in	680 kg/pair 1499 lbs/pair	200 to 2000 mm 7,87 to 78,74 in
C-Beam SX		Over Extension+	25 to 37 mm 0,98 to 1,46 in	60 to 100 mm 2,36 to 3,94 in	385 kg/pair 849 lbs/pair	150 to 1600 mm 5,91 to 62,99 in
Double I-Beam		Over Extension+	34 to 110 mm 1,34 to 4,33 in	35 to 150 mm 1,38 to 5,91 in	1540 kg/pair 3395 lbs/pair	150 to 2500 mm 5,91 to 98,43 in
C-Beam Locker		Regular and Over Extension	26 mm 1,02 in	80 mm 3,15 in	330 kg/pair 728 lbs/pair	300 to 1700 mm 11,81 to 66,93 in

ULTRA HEAVY DUTY.

UNDERSTANDING PRODUCT NAMES

The ULTRA HEAVY DUTY product names follow a clear system.

Each abbreviation stands for a specific feature. This allows you to identify the most important properties of a product at a glance.



Extension:	
Standard Partial	SP
Standard Full Extension	SF
Standard Over Extension	S0
Standard Over Extension+	SX
Bi-Directional Partial Extension	BP
Bi-Directional Full Extension	BF
Bi-Directional Over Extension	B0
Bi-Directional Over Extension+	BX
Base or Flat mount Partial Extension	FP
Base or Flat mount Full Extension	FF
Base or Flat mount Over Extension	FO
Base or Flat mount Over Extension+	FX
Linear	SL
Diverse extension lengths	SD

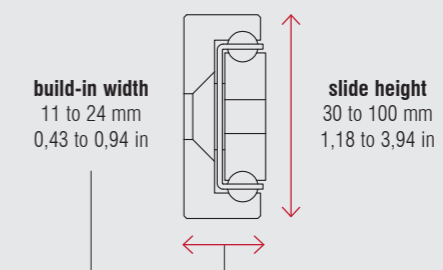
Material:	
Aluminium	AL
Stainless Steel 316L	CS
Carbon Steel	SC

FK BP50x17 SC | C-Beam BP Product Group



Specifications

- Bi-Directional Regular Extension
- 150 to 2000 mm (5,91 to 78,74 in)
- steel, stainless steel, aluminium
- up to 1750 kg/pair (3858 lbs/pair)



QR Code for the C-Beam BP Product Group

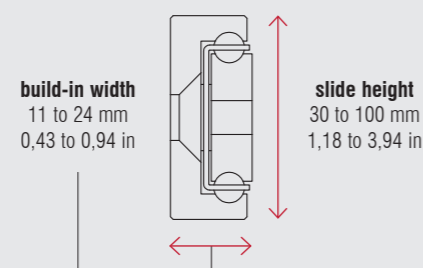


FK SP50x17 SC | C-Beam Product Group



Specifications

- Regular Extension
- 150 to 2000 mm (5,91 to 78,74 in)
- steel, stainless steel, aluminium
- up to 1750 kg/pair (3858 lbs/pair)



QR Code for the C-Beam Product Group

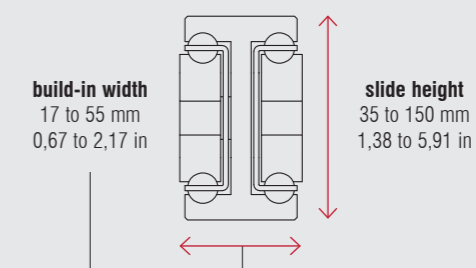


FK SF50x30 SC | I-Beam Product Group



Specifications

- Full Extension
- 150 to 3000 mm (5,91 to 118,11 in)
- steel, stainless steel, aluminium
- up to 2410 kg/pair (5316 lbs/pair)



QR Code for the I-Beam Product Group



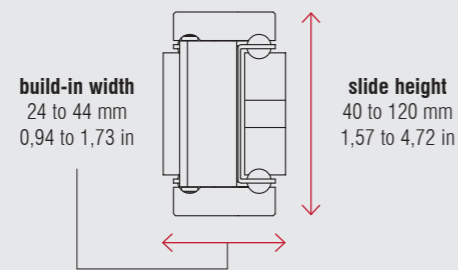
FK BF50x30 SC

I-Beam BF Product Group



Specifications

- Bi-Directional Full Extension
- 200 to 2600 mm (7,87 to 102,36 in)
- steel, stainless steel, aluminium
- up to 1890 kg/pair (4167 lbs/pair)

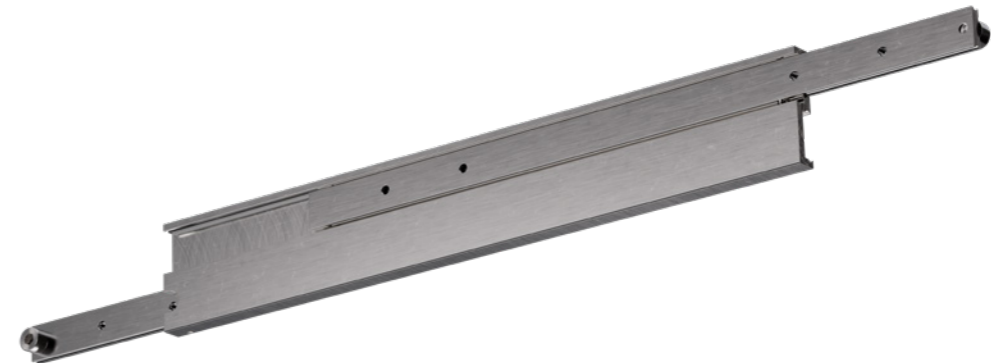


QR Code for the
I-Beam BF
Product Group



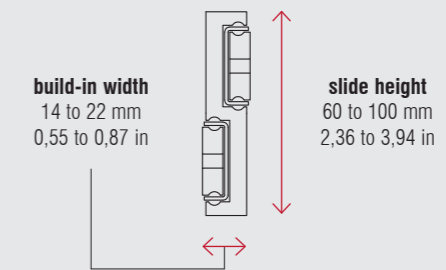
FK SF60x14 SC

S-Beam Product Group



Specifications

- Full Extension
- 200 to 2000 mm (7,87 to 78,74 in)
- steel, stainless steel, aluminium
- up to 435 kg/pair (959 lbs/pair)



QR Code for the
S-Beam
Product Group



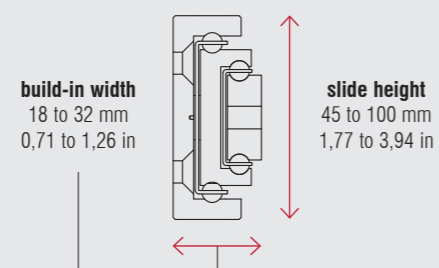
FK SF60x26 SC

C-Beam FE Product Group



Specifications

- Full Extension
- 150 to 2000 mm (5,91 to 78,74 in)
- steel, stainless steel, aluminium
- up to 1000 kg/pair (2205 lbs/pair)



QR Code for the
C-Beam FE
Product Group



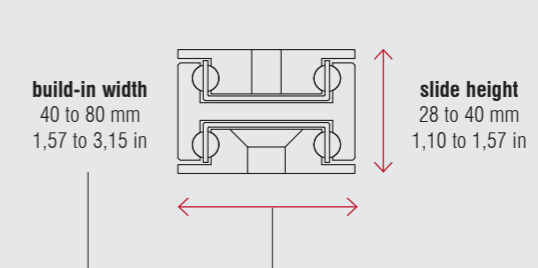
FK FF34x50 SC

I-Beam FF Product Group



Specifications

- Full Extension
- 200 to 1600 mm (7,87 to 62,99 in)
- steel, stainless steel, aluminium
- up to 300 kg/pair (661 lbs/pair)



QR Code for the
I-Beam FF
Product Group



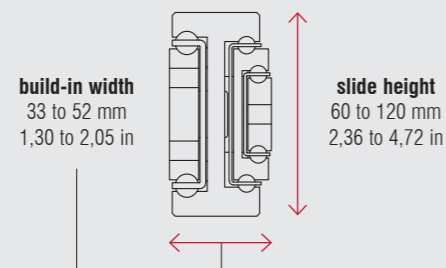
FK SX60x33 SC

I-Beam SX Product Group



Specifications

- Over Extension+
- 200 to 2000 mm (7,87 to 78,74 in)
- steel, stainless steel, aluminium
- up to 680 kg/pair (1499 lbs/pair)



QR Code for the I-Beam SX Product Group



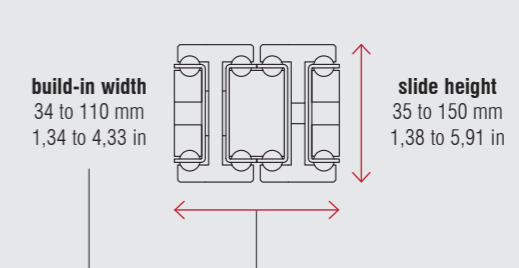
FK SX50x60 SC

Double I-Beam Product Group



Specifications

- Over Extension+
- 150 to 2500 mm (5,91 to 98,43 in)
- steel, stainless steel, aluminium
- up to 1540 kg/pair (3395 lbs/pair)



QR Code for the Double I-Beam Product Group



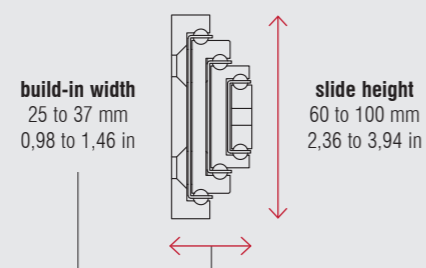
FK SX60x25 SC

C-Beam SX Product Group



Specifications

- Over Extension+
- 150 to 1600 mm (5,91 to 62,99 in)
- steel, stainless steel, aluminium
- up to 385 kg/pair (849 lbs/pair)



QR Code for the C-Beam SX Product Group



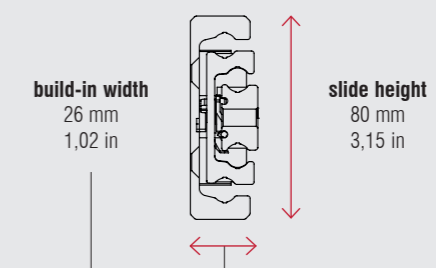
FK S080x27 SC LO

C-Beam Locker Product Group



Specifications

- Regular and Over Extension
- 300 to 1700 mm (11,81 to 66,93 in)
- steel, stainless steel, aluminium
- up to 330 kg/pair (728 lbs/pair)



QR Code for the C-Beam Locker Product Group



ULTRA HEAVY DUTY.

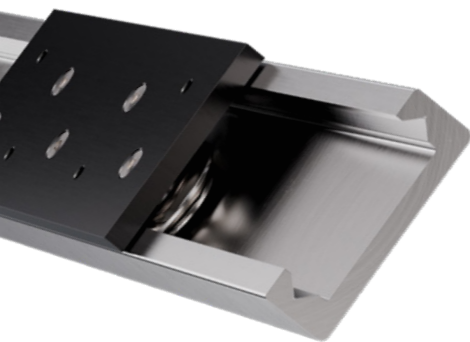
FL

LINEAR SLIDES

The ULTRA HEAVY DUTY FL product line includes precision linear slides made of high-quality aluminium. Thanks to their solid construction, wide selection of carriage variants, and various bearing configurations – with steel or Delrin rollers – they ensure smooth and accurate motion over long distances.



FL stands for precision, smooth running, and durability, making it ideal for applications that demand reliable linear movement with high repeatability – from automation and mechanical engineering to medical technology and laboratory environments.



FL SL23x17 AL

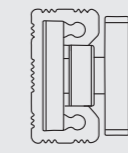
Linear Slide Product Group



Specifications

- Linear
- 50 to 5000 mm (1,97 to 196,85 in)
- aluminium
- up to 92 kg/carrier (203 lbs/carrier)

build-in width
20 to 80 mm
0,79 to 3,15 in



slide height
12 to 30 mm
0,47 to 1,18 in

QR Code for the
Linear Slide
Product Group



FL SL52x22 AL

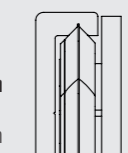
Linear Slide Product Group



Specifications

- Linear
- 50 to 5000 mm (1,97 to 196,85 in)
- aluminium
- up to 92 kg/carrier (203 lbs/carrier)

build-in width
20 to 80 mm
0,79 to 3,15 in



slide height
12 to 30 mm
0,47 to 1,18 in

QR Code for the
Linear Slide
Product Group



ULTRA HEAVY DUTY.

FZ

CYLINDRICAL ROLLER SLIDES

The ULTRA HEAVY DUTY FZ product line is designed for maximum rigidity and load-bearing capacity. These slides feature precision-engineered aluminium profiles with integrated cylindrical roller bearings, ensuring accurate guidance even under high loads and dynamic conditions.

With their compact design and exceptional structural stiffness, FZ slides are ideal for applications where stability and precision are critical – such as in industrial plants, heavy-duty extensions, or automation systems.

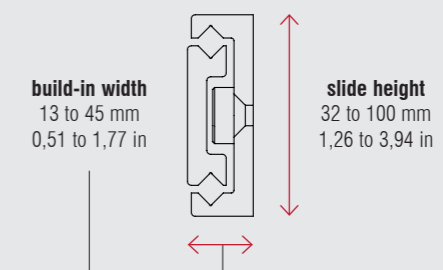


FZ SP52x17 AL | Cylindrical Roller Slide Product Group



Specifications

- Regular, Full, Over Extension and Over Extension+
- ↔ 150 to 2000 mm (5,91 to 78,74 in)
- ☑ aluminium
- ⚖ up to 400 kg/pair (882 lbs/pair)



QR Code for the
Cylindrical Roller Slide
Product Group

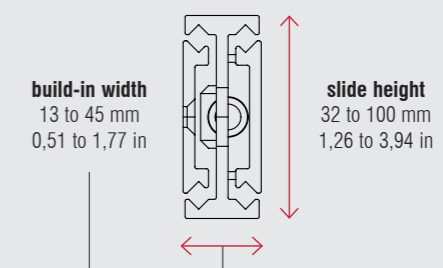


FZ SF52x20 AL | Cylindrical Roller Slide Product Group



Specifications

- Regular, Full, Over Extension and Over Extension+
- ↔ 150 to 2000 mm (5,91 to 78,74 in)
- ☑ aluminium
- ⚖ up to 400 kg/pair (882 lbs/pair)



QR Code for the
Cylindrical Roller Slide
Product Group



FILTERER EUROPE

FILTERER AG & CO KG

Höchster Strasse 11
Postfach 67
6890 Lustenau
AUSTRIA

T + 43 5577 8130
info@fulterer.com
www.fulterer.com

FILTERER AG

Industriestrasse 35
9430 St. Margrethen
SWITZERLAND

T + 41 71 747 61 61
info@fulterer.com
www.fulterer.com

FILTERER WORLDWIDE

FILTERER USA, INC.

542 Townsend Avenue
High Point, NC 27263-4552
USA

T +1 336 431 4646
orders@fultererusa.com
www.fultererusa.com

FILTERER USA, INC.

1900 Proforma Avenue, Unit F-2
Ontario, CA 91761
USA

T +1 909 947 0407
orders@fultererusa.com
www.fultererusa.com

FILTERER MÉXICO

S. DE R.L. DE C.V
Av. Morelos 26-28
CP 06040 Ciudad de México
MEXICO

T +52 55 2345 3248
mexico@fulterer.com
www.fulterer.com

FILTERER BRASIL EIRELI

Avenida Sete de Setembro 5011,
Cj. 802 | Água Verde
80250-205 Curitiba/PR
BRAZIL

T +55 41 99263 5066
brasil@fulterer.com
www.fulterer.com

FILTERER GUANGZHOU TRADING CO., LTD.

101 of Workshop, Building 1,
No.13 Shinan Road,
Dongchong Town
Nansha District, Guangzhou City
PEOPLES REPUBLIC OF CHINA

T +86 20 3136 0424
china@fulterer.com
www.fulterer.com

Filterer[®]