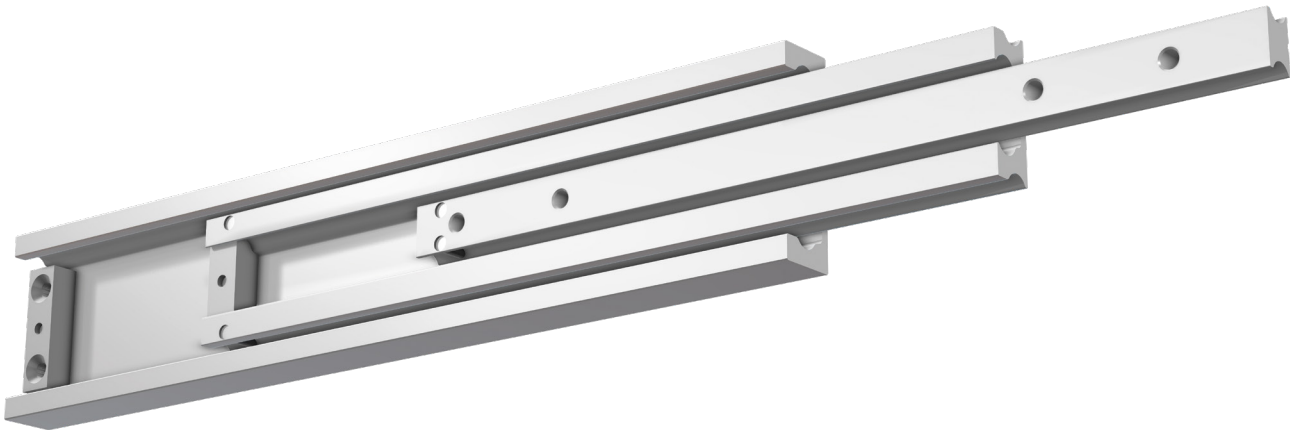







FR 5826

Full Extension Aluminium Ball Bearing Slide



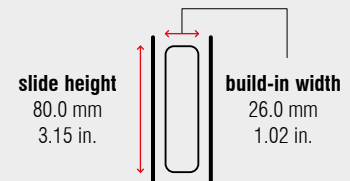
Specifications

-  side mount
-  26.0 mm / 1.02 in.
-  dynamic up to 300 kg / 660 lbs.
-  stainless steel ball bearing cages
-  aluminium

Characteristics

- lightweight ball bearing slide with high weight capacity
- symmetrical design
- slides are non-detachable
- applicable for flat-mount installation – reduced load capacity

Dimensions



Length		Extension		Weight		Item No.
				per set		aluminium
mm	inch	mm	inch	kg	lbs.	
300	11.81	300	11.81	2.41	5.31	5661
350	13.78	350	13.78	2.85	6.28	5662
400	15.75	400	15.75	3.31	7.30	5663
450	17.72	450	17.72	3.76	8.29	5664
500	19.69	500	19.69	4.20	9.26	5665
550	21.65	550	21.65	4.63	10.21	5666
600	23.62	600	23.62	5.04	11.12	5667
650	25.59	650	25.59	5.51	12.15	5668
700	27.56	700	27.56	5.86	12.92	5669
750	29.53	750	29.53	6.25	13.78	5670
800	31.50	800	31.50	6.72	14.82	5671
850	33.46	850	33.46	7.22	15.92	5672
900	35.43	900	35.43	7.65	16.87	5673
950	37.40	950	37.40	7.95	17.53	5674
1,000	39.37	1,000	39.37	8.50	18.74	5675

Packing Unit – Sets per Box: from 300 to 750 mm: **3** | from 800 to 1,000 mm: **2**