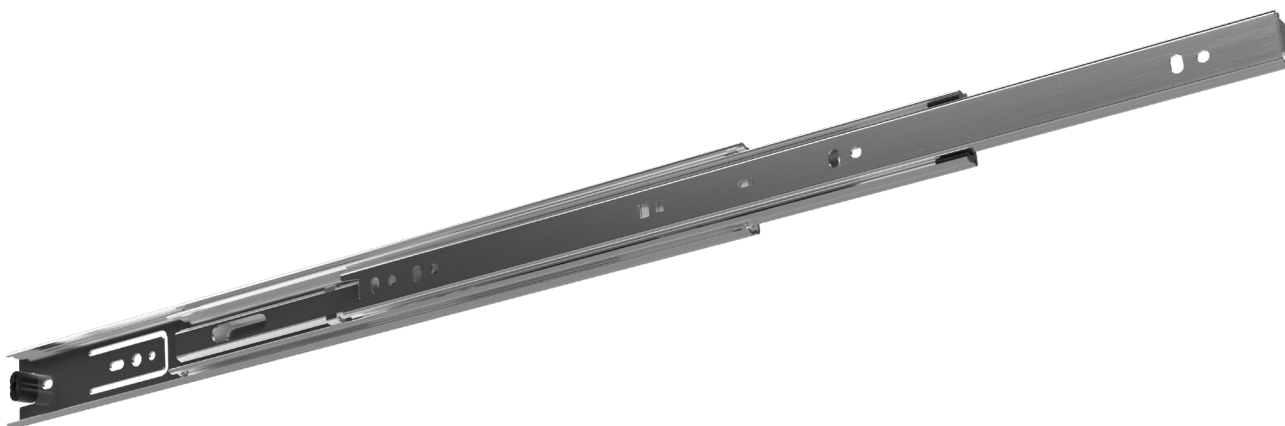







FR 5036 US | Corrediça telescópica com extensão total



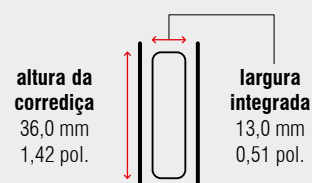
Especificações

-  montagem lateral
-  13,0 mm / 0,51 pol.
-  dinâmico até 34 kg / 75 lbs.
-  compartimentos de rolamentos de esferas
-  aço, zincada

Características

- fixação no sistema padrão 32 mm (1,26 pol.)
- com alavanca de desconexão
- design simétrico
- com detentor de manter fechado

Dimensões



Comprimento		Extensão		Peso		Nº do item
				por conjunto		zincada
mm	pol.	mm	pol.	kg	lbs.	
250	9,84	254	10,00	*	*	400300
300	11,81	305	12,01	*	*	400301
350	13,78	356	14,02	*	*	400302
400	15,75	406	15,99	*	*	400303
450	17,72	457	17,99	*	*	400304
500	19,69	508	20,00	*	*	400305
550	21,65	559	22,01	*	*	400306
600	23,62	610	24,02	*	*	400307
650	25,59	660	25,98	*	*	400308
700	27,56	711	27,99	*	*	400309

Unidade de embalagem – conjuntos por caixa, todos os comprimentos: 20

* mediante solicitação